



Flat 5

Union Street | | Newport | PO30 1PG

Offers In The Region Of £125,000



Flat 5

Union Street |

Newport | PO30 1PG

Offers In The Region Of

Located in the heart of Newport on Union Street, this flat offers a great blend of comfort and convenience. The property features a good sized living room, ideal for relaxation or entertaining guests. The single bedroom is a good sized room providing a cosy retreat. The bathroom is thoughtfully designed with a shower, bath, pedestal basin and WC.

The location of this flat is superb, just steps away from local amenities, shops, and transport links, making it an extremely convenient area to live. This property would be ideal for both first-time buyers and those looking to downsize.

- 1 BEDROOM FLAT
- SPACIOUS LIVING ROOM
- LOCATED CLOSE TO NEWPORT TOWN CENTRE
- EASY ACCESS TO TRANSPORT AND AMENITIES
- ALLOCATED PARKING SPACE

Front Exterior

Living Room

16'1 x 15'6 (4.9m x 4.72m)

Kitchen

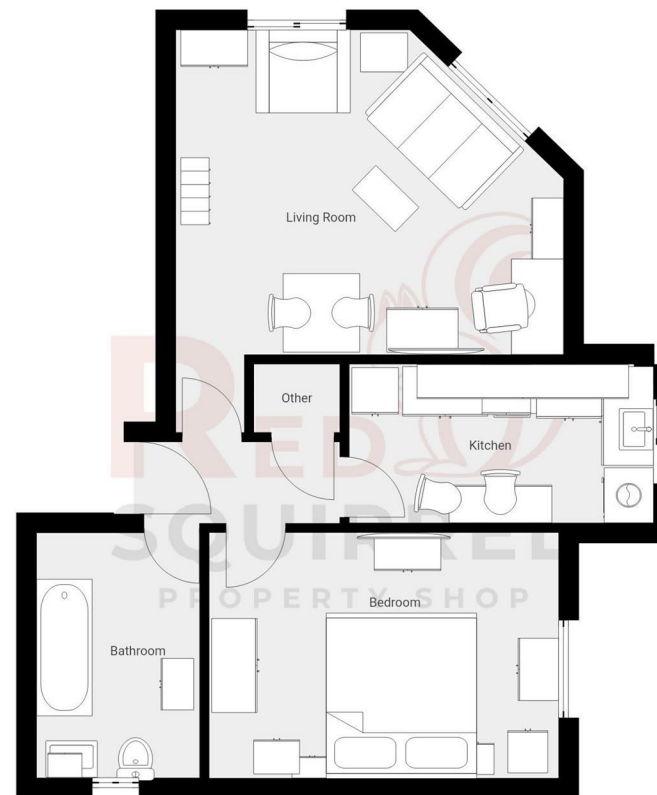
6'4 x 12'2 (1.93m x 3.71m)

Bedroom

9'9 x 13'11 (2.97m x 4.24m)

Bathroom

9'9 x 6'6 (2.97m x 1.98m)



Energy Efficiency Rating		Current	Potential
Very energy efficient - lower running costs			
(92 plus) A			
(81-91) B			
(69-80) C			75
(55-68) D			
(39-54) E	50		
(21-38) F			
(1-20) G			
Not energy efficient - higher running costs			
England & Wales		EU Directive 2002/91/EC	

Council Tax Band **A**
EPC Rating **E**

3 Langely Court Pyle Street
Newport
Isle of Wight
PO30 1LA
01983 521212

enquiries@redsquirrelpropertyshop.co.uk
www.redsquirrelpropertyshop.co.uk

THIS FLOOR PLAN IS PROVIDED WITHOUT WARRANTY OF ANY KIND. SENSOPIA DISCLAIMS ANY WARRANTY INCLUDING, WITHOUT LIMITATION, SATISFACTORY QUALITY OR ACCURACY OF DIMENSIONS.